

# MPX™-2 System

Maximize LC/MS/MS  
throughput

ONE TOUCH PRODUCTIVITY





## Monitor in real time for maximum uptime

Check system performance at a glance. A dynamic status screen displays individual pressure traces, column temperature and color-coded fault alerts for each HPLC stream. The screen also shows you which stream is flowing into the mass spectrometer and which stream is being diverted to waste. To maximize system up time, you can use fault recovery settings to automatically shut down the system when over pressure, or you can divert samples to another stream to maintain performance.

### Run up to 2,300 samples unattended

For extended operation, you can increase the sample capacity of the MPX™-2 System by configuring it with either the Shimadzu autosampler, which can hold up to twenty-four 96-well plates (with optional Rack Changer) or the CTC PAL autosampler.

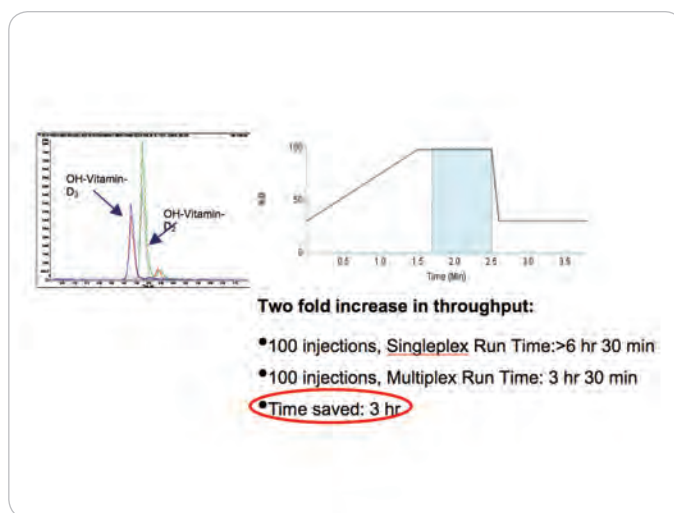
## Three modes of operation

There are three different ways to run samples on the MPX™-2 System:

1. Stagger injections from each of two HPLC systems running the same method
2. Stagger injections from two HPLC systems running two different methods
3. Run two sequential sample batches from two HPLC systems.



Instrument View Status Window within Analyst® Software provides real time monitoring of instrument parameters so any potential issues can be detected before they occur.



Staggered injections double throughput: Using standard chromatography, peaks of interest elute from 1.8 to 2.3 minutes within an overall run time of 3.5 minutes. By multiplexing staggered injections, a second analysis is performed during the dead time between analyses to double the number of runs performed during a 3.5 minute run time.

# Dual-stream multiplexing

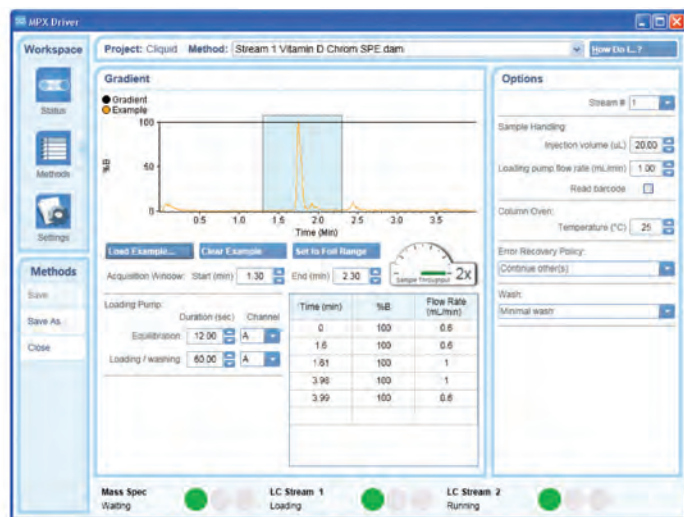
The MPX™-2 System is a dual-stream multiplexing solution for use with Analyst® and/or Cliquid® Software. It provides a single point of control to multiple HPLC systems configured for on-line sample preparation and/or concurrent LC/MS/MS analysis.

## Choose the configuration that works for you

Use the MPX™-2 System with either the standard pressure Shimadzu UFLC or with high pressure UFLC XR pumps and 2 Shimadzu or a CTC HTS autosampler(s).

## Get up to 2X more throughput

The ability to stagger chromatographic runs within custom, predefined acquisition windows allows you to use the dead time before and after peak detection for analyzing the next sample. So your lab can deliver results at up to twice the speed, with half the turnaround time per sample batch: do in an overnight run what used to be done in an entire day.



The method editor view within Analyst® Software provides a single page to enter all the MPX™-2 System settings.

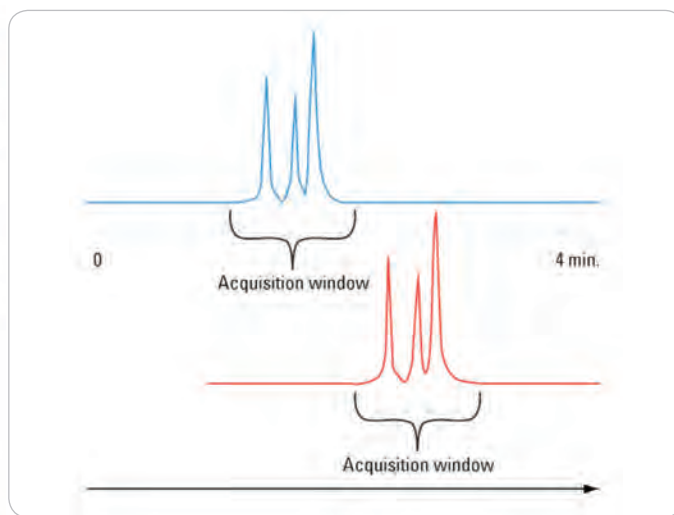


Diagram of staggered injections from two HPLC systems used to maximize throughput.



# You invest in our technology; we invest in your success.

As the world leader in mass spectrometry, AB SCIEX solutions are backed by the industry's most extensive service and support organization. With more than 1000 service professionals, experienced compliance specialists, and over 150 PhD application scientists worldwide, we are dedicated to supporting your technical needs and helping you get the most out of your AB SCIEX systems.

AB SCIEX service professionals are recognized as the most highly qualified in the industry. They are certified on our instrument platforms through a rigorous 4-step certification program, with re-certification occurring every two years. This award-winning program helps to ensure that you receive the most efficient, highest-quality, and most up-to-date service available for AB SCIEX products and technology. Choose from flexible service plans and a variety of services for the right level of support for your laboratory's needs and budget.

Our customer support network is available to provide expert assistance in the use and application of AB SCIEX products through a comprehensive range of services, including application support, technical service, and training.

Whether you access our service and support team by phone, email, on-site visits, or through our innovative remote monitoring technology, you can be confident that the AB SCIEX organization will be there for you 24x7.

For more information, visit [www.absciex.com](http://www.absciex.com)

**For Research Use Only. Not for use in diagnostic procedures.**

© 2010 AB SCIEX. The trademarks mentioned herein are the property of AB Sciex Pte. Ltd. or their respective owners. AB SCIEX™ is being used under license. ICAT® is a registered trademark of the University of Washington and is exclusively licensed to AB Sciex Pte. Ltd.

Publication number 0260610-01



**Headquarters**  
353 Hatch Drive | Foster City CA 94404 USA  
Phone 650-638-5800  
[www.absciex.com](http://www.absciex.com)

**International Sales**  
For our office locations please call the division  
headquarters or refer to our website at  
[www.absciex.com/offices](http://www.absciex.com/offices)