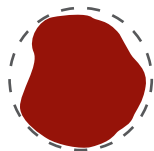
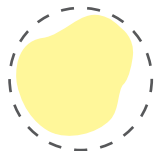


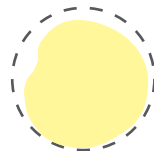
Blood



Blood



Sweat



Sweat



Tears

Spend more time analyzing blood, sweat, and tears with the AB SCIEX QTRAP® 5500, and less time generating them.

Name

Date of Collection

Study: ABS-01012011

Time Period: T=30 mins

Group: 2

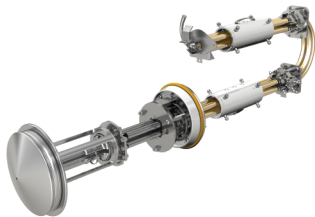
Subject: ABS-022



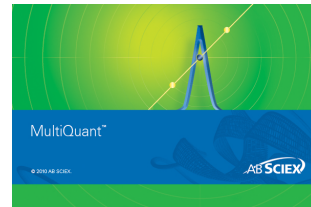
The AB SCIEX QTRAP® 5500 System with proven Turbo V™ source technology and MultiQuant™ Software



AB SCIEX QTRAP® 5500 System



Ion path



MultiQuant™ Software

Dried blood spot analysis demands the most sensitive and selective mass spectrometer available. The combined state of the art Curved LINAC® collision cell and QJet® ion guide of the QTRAP® 5500 provides for ultra high sensitivity detection and the ability to quantitate using MRM³ for eliminating challenging endogenous interferences. Use the MultiQuant™ SignalFinder™ algorithm to extend the assay linear range thereby reducing the need for DBS dilutions. The QTRAP® 5500 remains your best choice for this widely adopted sampling technique.

Visit www.absciex.com/applications and see how our blood, sweat, and tears can help you implement DBS techniques in your lab.